

INSTRUMENT APPROACH - ICAO

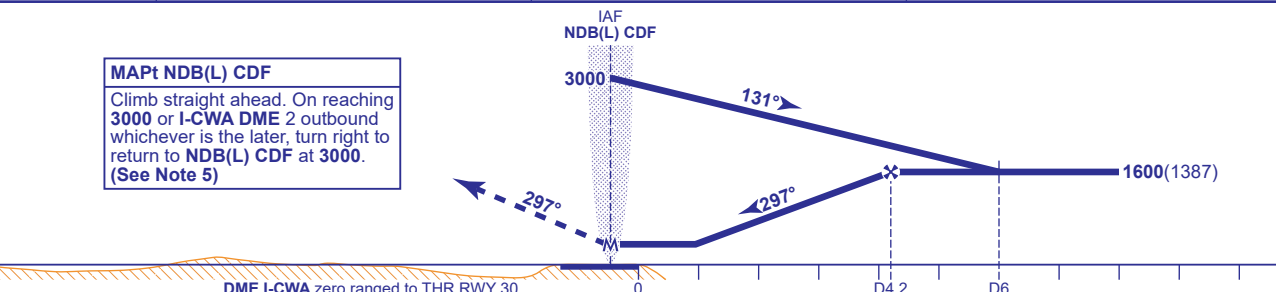
CARDIFF
NDB(L)/DME y
RWY 30
(ACFT CAT A,B)

		APP 119.155, 125.855	CARDIFF APPROACH	AD ELEVATION 220	<div>NDB(L)/DME y RWY 30 (ACFT CAT A,B)</div>
MSA 25NM NDB(L) CDF	MSA 10NM NDB(L) CDF	TWR 133.105	CARDIFF TOWER	THR ELEVATION 213	
		RAD 125.855	CARDIFF RADAR	OBSTACLE ELEVATION 1299 AMSL (1086) (ABOVE THR)	
		119.155 (LARS)			
ATIS 132.480	CARDIFF INFORMATION	BEARINGS ARE MAGNETIC	TRANSITION ALTITUDE 6000		



RECOMMENDED PROFILE Gradient 5.3%, 320FT/NM

DME I-CWA	3	2	1
ALT(HGT)	1230(1017)	910(697)	590(377)



Aircraft Category		A	B	Rate of descent	G/S KT					
OCA (OCH)	WITH DME	570(357)	570(357)		FT/MIN	160	140	120	100	80
	NO DME	620(407)	620(407)			860	750	650	540	430
VM(C)OCA (OCH AAL)		Total Area	680(460)	820(600)						

ALTERNATIVE PROCEDURE EXTENDED HOLDING PATTERN
Extend outbound leg of the NDB(L) CDF holding pattern to I-CWA DME 5 descending to 1600(1387) then proceed as for main procedure.

AIRCRAFT UNABLE TO RECEIVE DME I-CWA
As for main and alternative procedures except fly outbound leg for 2.5 MIN and when established descend to MDH. Radar ranges will be passed at 6NM outbound and 4NM inbound.

- NOTE 1 FAT offset 1° from RWY C/L.
2 Subject to ATC approval, aircraft inbound to NDB(L) CDF and receiving DME I-CWA may descend to 3000 after passing I-CWA DME 10.
3 ATC will authorise crossing of EG D119 before start of procedure.
4 Timed procedure not available without radar monitoring.
5 Aircraft to remain within I-CWA DME 11 during the missed approach turn in order to be contained within Cardiff controlled airspace. If unable to comply, notify ATC.

CHANGE (8/21): APP, TWR, RAD FREQUENCIES REVISED.